

I, MARSHA STILLER, CLERK OF THE CIRCUIT COURT OF MARTIN COUNTY, FLORIDA, HEREBY CERTIFY THAT THIS PLAT WAS FILED FOR RECORD IN PLAT BOOK 12, PAGE 23, MARTIN COUNTY, FLORIDA, PUBLIC RECORDS, THIS \_\_\_\_\_ DAY OF \_\_\_\_\_, 19\_\_\_\_.

MARSHA STILLER,  
CLERK CIRCUIT COURT  
MARTIN COUNTY, FLORIDA.

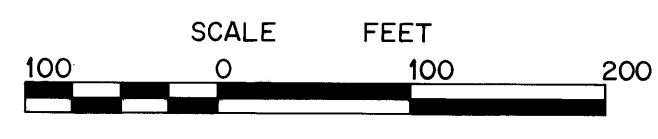
BY: \_\_\_\_\_  
DEPUTY CLERK

FILE NO. \_\_\_\_\_

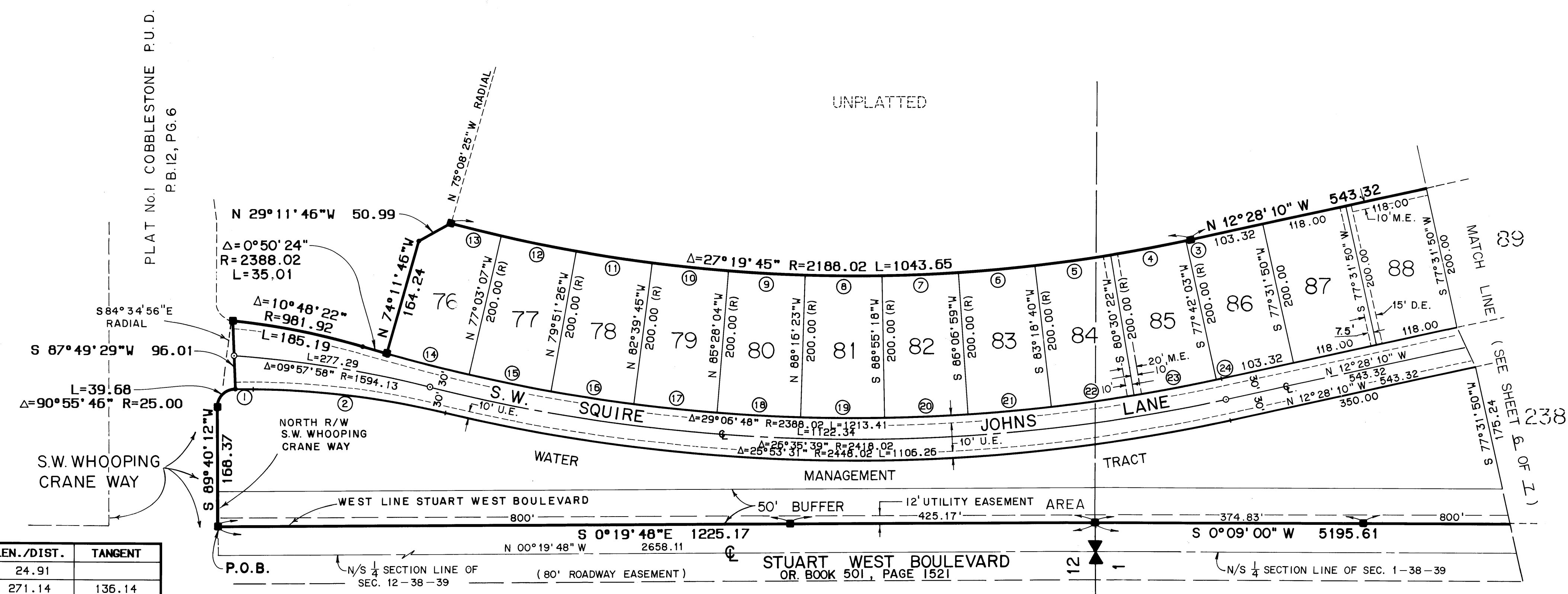
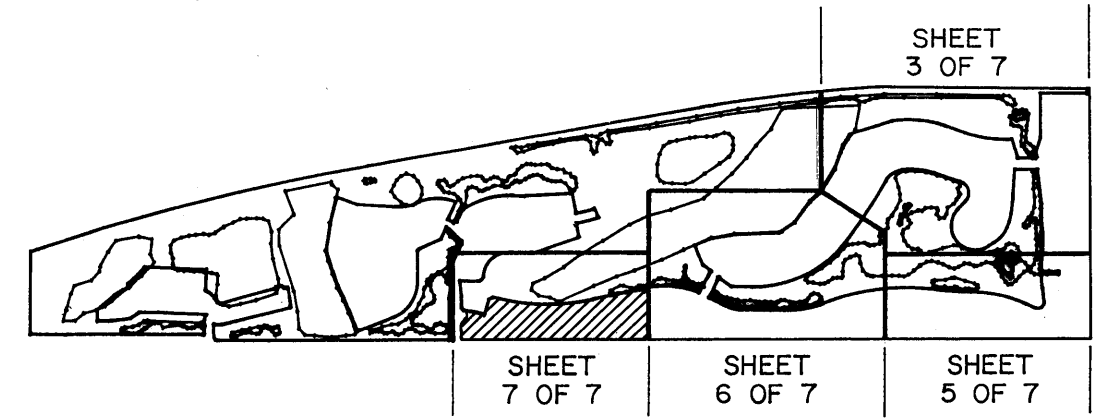
(CIRCUIT COURT SEAL)

# PLAT NO. 2 COBBLESTONE, P.U.D.

LYING IN SECTIONS 1 & 12, TOWNSHIP 38 SOUTH, RANGE 39 EAST  
MARTIN COUNTY, FLORIDA



MARCH, 1989



Δ	DELTA/BEARING	RADIUS	LEN./DIST.	TANGENT
1	N 0°35'59"E		24.91	
2	12°49'23"	1211.49	271.14	136.14
3	0°10'13"	2188.02	6.50	3.25
4	02°48'19"	2188.02	107.13	53.57
5	02°48'18"	2188.02	107.12	53.57
6	02°48'19"	2188.02	107.13	53.57
7	02°48'19"	2188.02	107.13	53.57
8	02°48'19"	2188.02	107.13	53.57
9	02°48'19"	2188.02	107.13	53.57
10	02°48'19"	2188.02	107.13	53.57
11	02°48'19"	2188.02	107.13	53.57
12	02°48'19"	2188.02	107.13	53.57
13	01°54'42"	2188.02	73.00	36.50
14	02°51'21"	2388.02	119.03	59.53
15	02°48'19"	2388.02	116.92	58.47
16	02°48'19"	2388.02	116.92	58.47
17	02°48'19"	2388.02	116.92	58.47
18	02°48'19"	2388.02	116.92	58.47
19	02°48'19"	2388.02	116.92	58.47
20	02°48'19"	2388.02	116.92	58.47
21	02°48'19"	2388.02	116.92	58.47
22	02°48'18"	2388.02	116.91	58.47
23	02°48'19"	2388.02	116.92	58.47
24	0°10'13"	2388.02	7.10	3.55

**SURVEYOR'S NOTES**

M.E. - DENOTES MAINTENANCE EASEMENT  
(R) - DENOTES RADIAL LINE  
○ - DENOTES P.C.P. (PERMANENT CONTROL POINT) # 959  
□ - DENOTES P.R.M. (PERMANENT REFERENCE MONUMENT) FOUND # 959  
■ - DENOTES P.R.M. (PERMANENT REFERENCE MONUMENT) SET # 959  
D.E. - DENOTES DRAINAGE EASEMENT  
U.E. - DENOTES UTILITY EASEMENT

THERE SHALL BE NO BUILDING OR ANY OTHER KIND OF CONSTRUCTION OR TREES OR SHRUBS PLACED ON DRAINAGE EASEMENTS.

THERE SHALL BE NO BUILDING OR OTHER PERMANENT STRUCTURES PLACED ON UTILITY EASEMENTS.

BEARING BASE: THE EAST LINE OF THE SOUTHWEST QUARTER OF SECTION 12 IS ASSUMED TO BEAR N 00°19'48"W AND ALL BEARINGS SHOWN HEREON ARE RELATIVE THERETO.

LINDAHL, BROWNING, FERRARI & HELLSTROM, INC.  
CONSULTING ENGINEERS, PLANNERS & SURVEYORS

P.O. BOX 727  
JUPITER, FLORIDA 33468

10 CENTRAL PARKWAY  
SUITE 400  
STUART, FLORIDA 34994

1905 SOUTH 25TH STREET  
SUITE 205  
FORT PIERCE, FLORIDA 34947

2065 15TH AVENUE  
VERO BEACH, FLORIDA 32960